

# Getting started (RI Requirements)



Here are some tips to get you started. Sections 1 - 3 are general, about creating, editing and labelling pages. Section 4 explains how the pages for the requirements analysis documentation are set up.

## On this page:

- 1. Create a page
- 2. Add to your page
- 3. Labelling pages
- 4. Organisation of the RI requirements analysis pages
  - Top level page and topic pages
  - Topic requirements by RI
  - Requirements collated per RI

## 1. Create a page

- Click "Create" and select "Blank Page" to create your first empty page.
- Alternatively, click "..." (just to the right of the Create button) to create a page based on a existing template.
- New pages are created as children of the page you are currently viewing.

## 2. Add to your page

- Click "Edit" to enter the Confluence editor and use the page layouts feature to structure your content using sections and columns.
- Use headings to format your text and drag and drop images into your page to provide visual interest.
- Click "Insert more content" (the "+" dropdown on the editor toolbar) and select "Other Macros" to add macros for navigation, special formatting and other media.

## 3. Labelling pages

- Labels help keep pages organised and make it easier for you to find the information you need. Click "Labels" at the bottom of a page to add or edit.

## 4. Organisation of the RI requirements analysis pages

Here are some points about how the content is organised. See sidebar left and figure right.

### • Top level page and topic pages

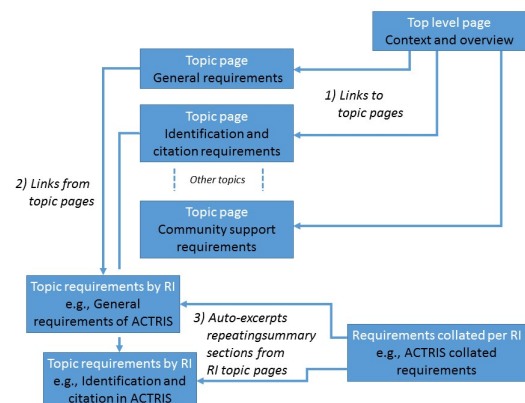
The [Context and overview \(RI Requirements\)](#) page is the top-level introductory page. Then there are 7 main topic pages, starting with [General requirements](#) and ending with [Community support requirements](#). These are linked from the top level page - (1) in figure.

### • Topic requirements by RI

These are the main pages where content should initially be entered. For each RI, there are upto 7 pages, 1 per topic. They are linked from the 7 topic pages - (2) in figure. In several cases, there are less than 7 topic pages per RI. This is the case when no information has been gathered for that topic from that RI. If you need a new one of these pages created and linked, please ask. You can do that while editing any page by [starting a "task list"](#).

### • Requirements collated per RI

These pages collate the summary sections from each of the "topic requirements by RI" pages. Content of these pages is generated partially automatically - (3) in figure. Please take care when editing these pages i.e., **do not** remove or edit the macros.



## Related pages

"contentbylabel"

parameters should not be empty