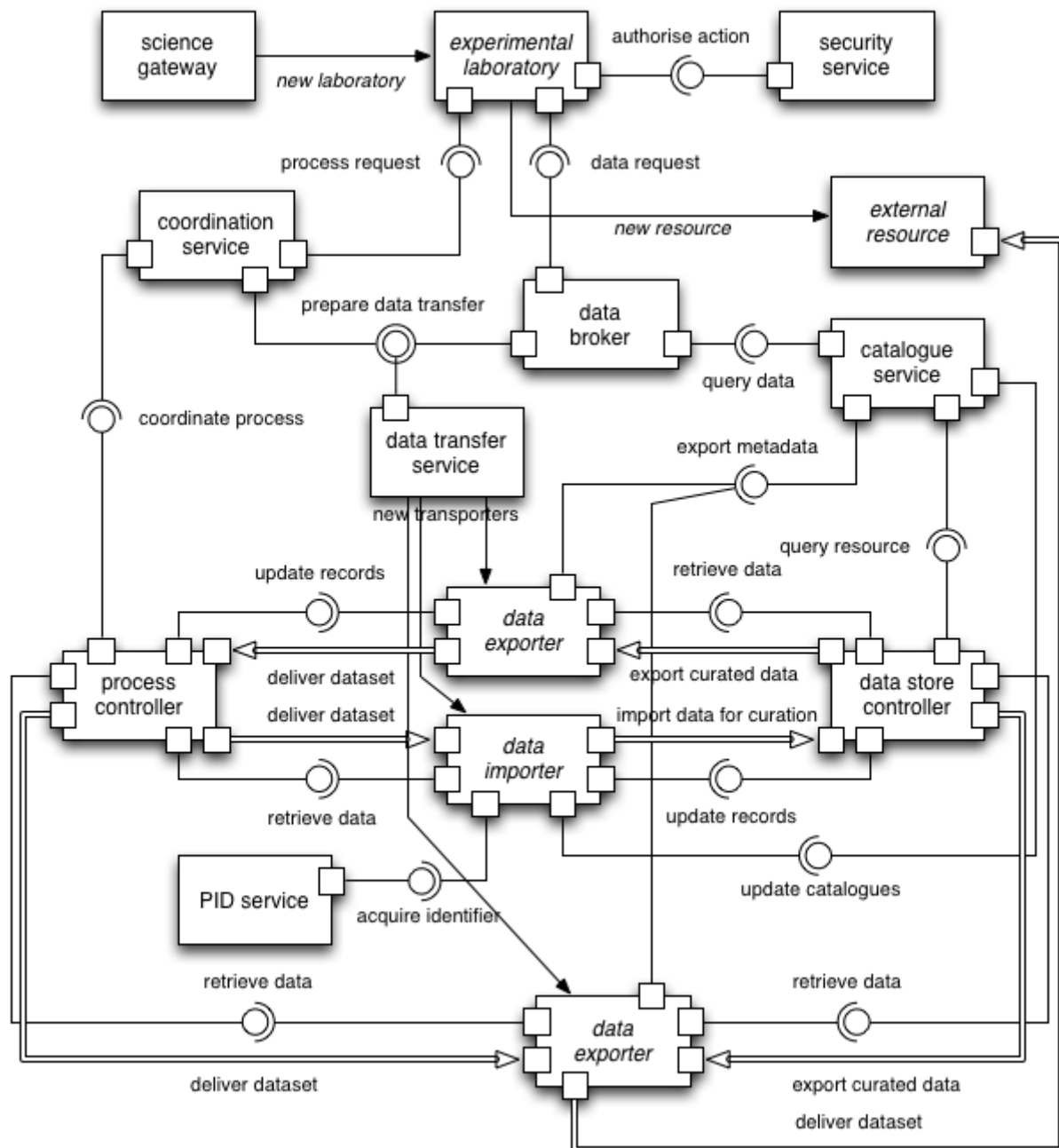


# EPOS/ENVRI Modelling

A (very) generic overview of EPOS data access and (RI-internal) processing in terms of ENVRI-RM computational objects.



Two current possible avenues of development:

- **Instantiation** – identifying specific services created or in the process of being created that are instances of the computational objects above.
- **Case study**– take a usecase (one out of FutureVolc?) that allows a story to be told about how the user could interact with data via EPOS in terms of the ENVRI-RM.