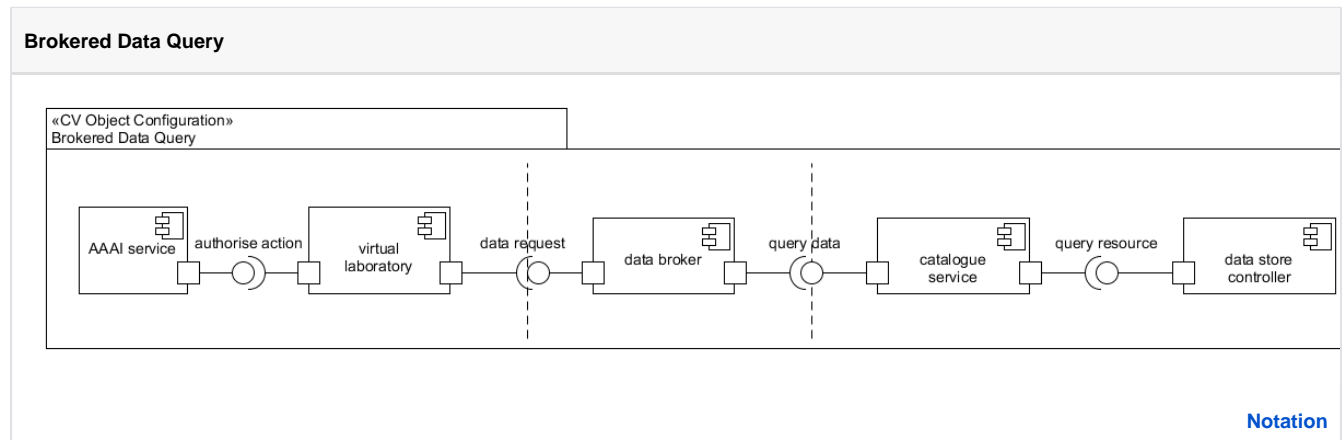


CV Brokered Data Query

Querying curated data resources requires that the request be brokered by the data publishing subsystem before any results will be retrieved from the data curation subsystem and delivered to the client from which the source came.



Virtual laboratory is able to query the data held within a research infrastructure subject to access privileges governed by the **AAAS service** (invoked via its *authorise action* interface). Data requests are forwarded to a **data broker** within the data publishing subsystem, which will interpret the request and contact any internal services needed to fulfil it. In this case, the data broker will invoke the **catalogue service** via its *query data* interface; the catalogue service will locate the datasets needed to answer any given query and then proceed to *query resources* within infrastructure **data store controller**.